

IMPLANT SYSTEM

IB Series Fixture
Internal Bone level

IB **T**

IB

IB **MT**

IB **mini**

ACH Medical
Achieving the Future



**DENTAL IMPLANTS
SYSTEM**



**MEDICAL INSTRUMENT
SYSTEM**

ACH Medical Co., Ltd is an established manufacturer of premium products for dental and medical devices. Since its establishment in 2008, ACH Medical has desired to keep people well by supporting clinicians through high quality products and services.

Our first priority is quality assurance to satisfy all our customer`s demands. We also guarantee to keep developing more advanced products in collaboration with global research institutes and universities.

We are pursuing a reliable company that provides innovative products and services to improve patient`s health.

G·DIFF SYSTEM IB SERIES LINE-UP

Unit : mm

IB^T

PINK CONNECION



Ø3.5

L : 7.0, 8.0, 9.5, 11.0, 12.5, 14.5

IB



Ø3.5

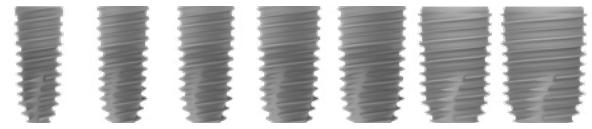


Ø4.0

L : 7.0, 8.0, 9.5, 11.0, 12.5, 14.5

IB^{MT}

BLUE CONNECTION



Ø3.5 Ø4.0 Ø4.5 Ø5.0 Ø5.5 Ø6.0 Ø7.0

L : 7.0, 8.0, 9.5, 11.0, 12.5, 14.5



Ø4.5



Ø5.0



Ø5.5

L : 7.0, 8.0, 9.5, 11.0, 12.5, 14.5



Ø3.5



Ø4.0



Ø4.5



Ø5.0

L : 8.0, 10.0, 12.0, 14.0

GREEN CONNECTION

IB^{mini}



Ø3.0

L : 8.0, 9.5, 11.0, 12.5, 14.5



Ø2.5



Ø3.0

G/H : 2.5, 4.0

L : 8.0, 9.5, 11.0, 12.5, 14.5



Ø2.5

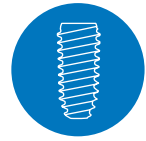


Ø3.0

G/H : 2.0, 4.0

L : 8.0, 9.5, 11.0, 12.5, 14.5

Internal Bone Level - Tapered IB^T System



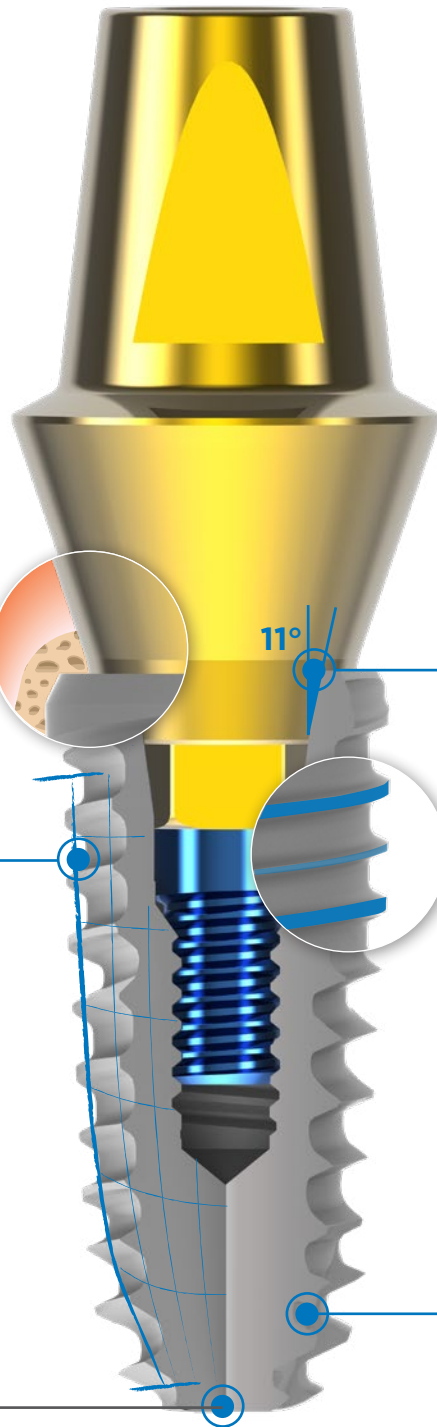
IB-T



TAPERED SHAPE



CONNECTION



Platform Switching

Reduces the risk of inflammatory cell infiltration
Greatly contributes to marginal bone preservation and soft tissue attachment

Tapered Body

Allows the compressive load to be transferred to the apex of implant
Allows excellent primary stability especially in soft bone

3 Blade Cutting Edge

Self-tapping function allows smooth insertion with minimal bone destruction
Rounded implant apex reduces risk of bone perforation

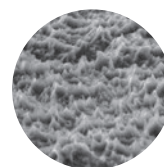
Morse Tapered Hex Connection

Provides anti-rotation and allows for convenient indexing of the abutment
Distributes the load to the fixture evenly and helps to reduce the micro movement

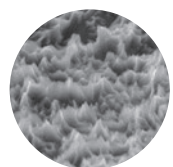
Hybrid Double Thread

Allows Easier and quicker implant insertion in various bone condition
Helps to reduce bone stress during insertion and penetrate the bone with ease

x3.0k



x5.0k

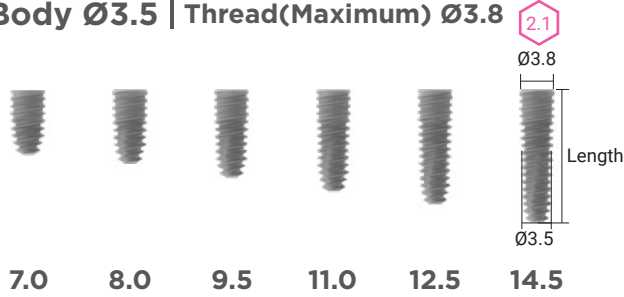


S.L.A Surface Treatment Sandblasted, Large grits, Acid etched

Most researched and proven surface technology

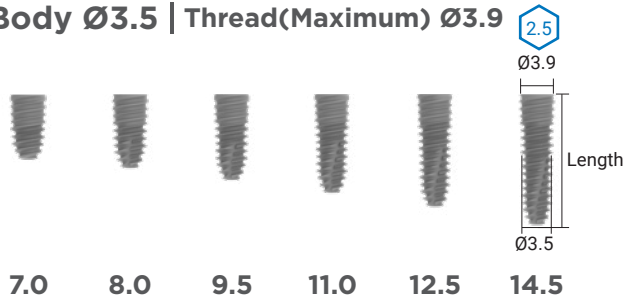
Unit : mm, Scale 1 : 1.2 / mm

Body Ø3.5 | Thread(Maximum) Ø3.8



Connection	PINK	
	Double Hex	Single Hex
Length		
7.0	KK 35 07 SA	N/A
8.0	KK 35 08 SA	
9.5	KK 35 10 SA	
11.0	KK 35 11 SA	
12.5	KK 35 13 SA	
14.5	KK 35 15 SA	

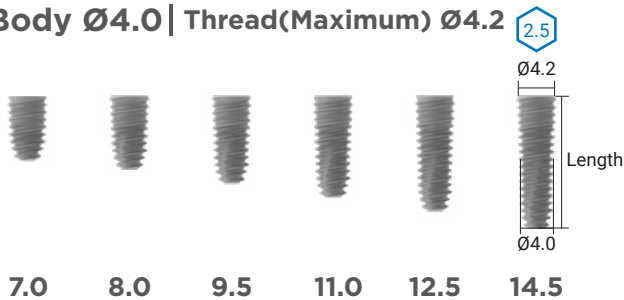
Body Ø3.5 | Thread(Maximum) Ø3.9



**PFX-XX XX SD:Double hex*

Connection	BLUE	
	Double Hex	Single Hex
Length		
7.0	N/A	PFX-39 07 SS
8.0		PFX-39 08 SS
9.5		PFX-39 10 SS
11.0		PFX-39 11 SS
12.5		PFX-39 13 SS
14.5		PFX-39 15 SS

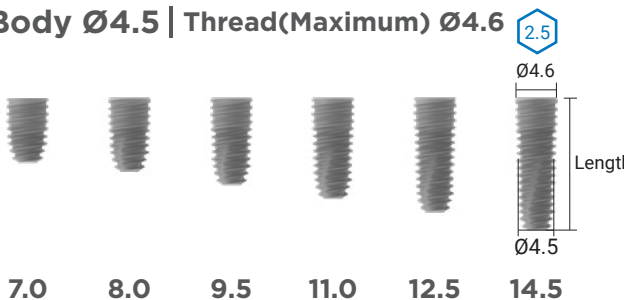
Body Ø4.0 | Thread(Maximum) Ø4.2



**PFX-XX XX SD:Double hex*

Connection	BLUE	
	Double Hex	Single Hex
Length		
7.0	KK 40 07 SA	PFX-42 07 SS
8.0	KK 40 08 SA	PFX-42 08 SS
9.5	KK 40 10 SA	PFX-42 10 SS
11.0	KK 40 11 SA	PFX-42 11 SS
12.5	KK 40 13 SA	PFX-42 13 SS
14.5	KK 40 15 SA	PFX-42 15 SS

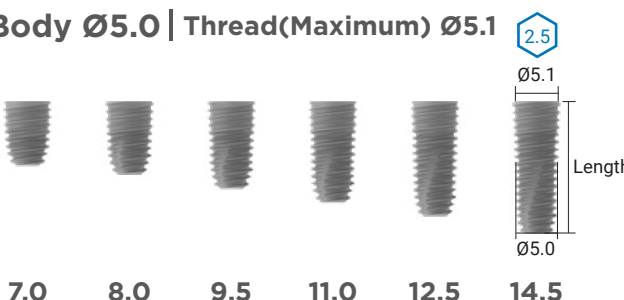
Body Ø4.5 | Thread(Maximum) Ø4.6



**PFX-XX XX SD:Double hex*

Connection	BLUE	
	Double Hex	Single Hex
Length		
7.0	KK 45 07 SA	PFX-46 07 SS
8.0	KK 45 08 SA	PFX-46 08 SS
9.5	KK 45 10 SA	PFX-46 10 SS
11.0	KK 45 11 SA	PFX-46 11 SS
12.5	KK 45 13 SA	PFX-46 13 SS
14.5	KK 45 15 SA	PFX-46 15 SS

Body Ø5.0 | Thread(Maximum) Ø5.1

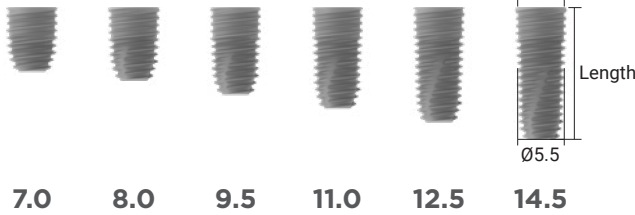


**PFX-XX XX SD:Double hex*

Connection	BLUE	
	Double Hex	Single Hex
Length		
7.0	KK 50 07 SA	PFX-51 07 SS
8.0	KK 50 08 SA	PFX-51 08 SS
9.5	KK 50 10 SA	PFX-51 10 SS
11.0	KK 50 11 SA	PFX-51 11 SS
12.5	KK 50 13 SA	PFX-51 13 SS
14.5	KK 50 15 SA	PFX-51 15 SS

*Cover screw **KCS 16(Pink)**, **ATCS 20 R(Blue)** is included

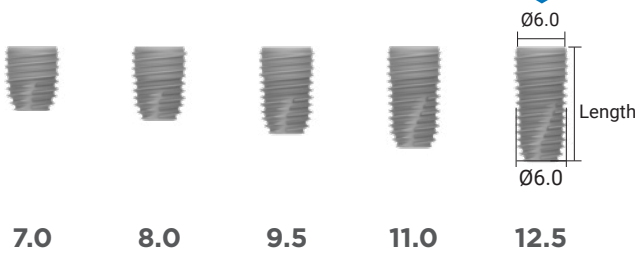
Body Ø5.5 | Thread(Maximum) Ø5.5



*PFX-XX XX SD:Double hex

Connection	BLUE	
Length	Double Hex	Single Hex
7.0	KK 55 07 SA	PFX-55 07 SS
8.0	KK 55 08 SA	PFX-55 08 SS
9.5	KK 55 10 SA	PFX-55 10 SS
11.0	KK 55 11 SA	PFX-55 11 SS
12.5	KK 55 13 SA	PFX-55 13 SS
14.5	KK 55 15 SA	PFX-55 15 SS

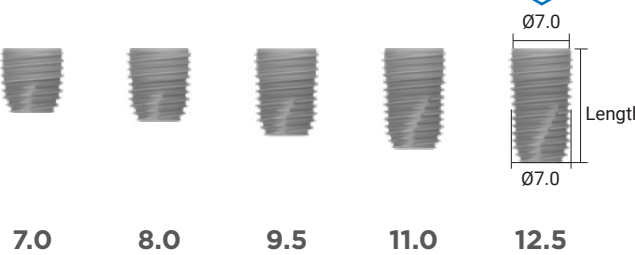
Body Ø6.0 | Thread(Maximum) Ø6.0



*PFX-XX XX SD:Double hex

Connection	BLUE	
Length	Double Hex	Single Hex
7.0		PFX-60 07 SS
8.0		PFX-60 08 SS
9.5	N/A	PFX-60 10 SS
11.0		PFX-60 11 SS
12.5		PFX-60 13 SS

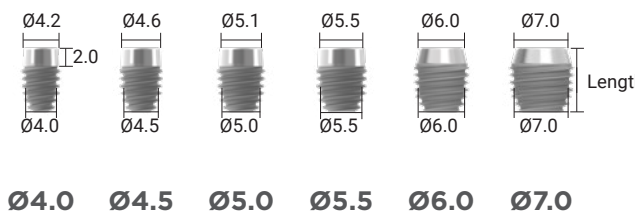
Body Ø7.0 | Thread(Maximum) Ø7.0



*PFX-XX XX SD:Double hex

Connection	BLUE	
Length	Double Hex	Single Hex
7.0		PFX-70 07 SS
8.0		PFX-70 08 SS
9.5	N/A	PFX-70 10 SS
11.0		PFX-70 11 SS
12.5		PFX-70 13 SS

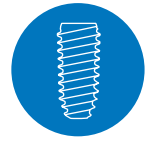
Special Length



Connection		BLUE	
Dia.	Length	Double Hex	Single Hex
Ø4.0		N/A	PFX-42 07 SSP
Ø4.5		KS 45 05 SA	PFX-46 07 SSP
Ø5.0	7.0	KS 50 05 SA	PFX-51 07 SSP
Ø5.5		KS 55 05 SA	PFX-55 07 SSP
Ø6.0		N/A	PFX-60 07 SSP
Ø7.0		N/A	PFX-70 07 SSP

*Cover screw **KCS 16(Pink)**, **ATCS 20 R(Blue)** is included

Internal Bone Level IB System



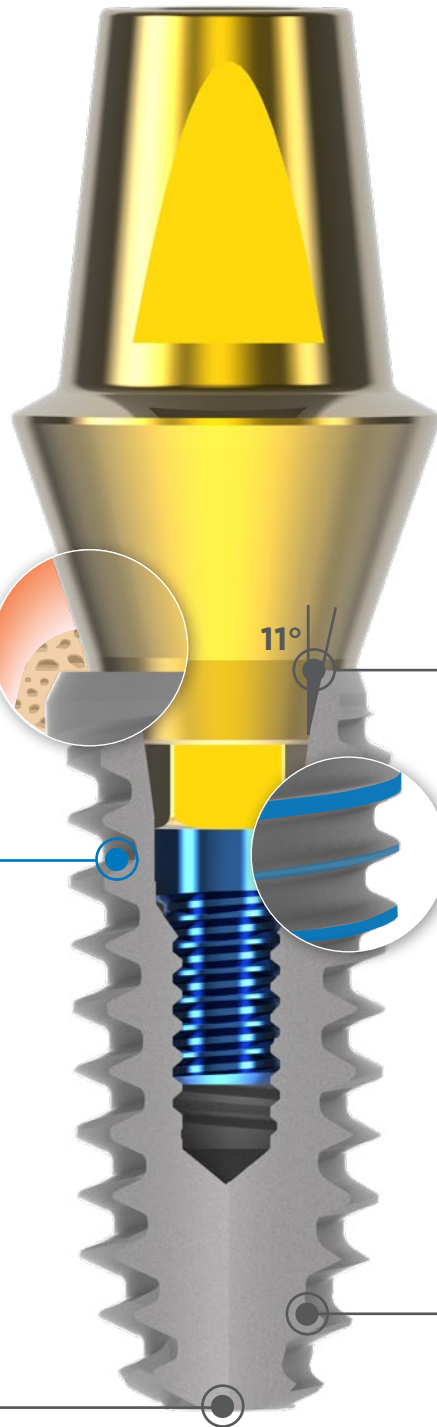
IB



STRAIGHT SHAPE



CONNECTION



Platform Switching

Reduces the risk of inflammatory cell infiltration
Greatly contributes to marginal bone preservation and soft tissue attachment

Straight Body

Allows optimal stability in hard bone
Helps to avoid over compression of the dense bone

Morse Tapered Hex Connection

Provides anti-rotation and allows for convenient indexing of the abutment
Distributes the load to the fixture evenly and helps to reduce the micro movement

Hybrid Double Thread

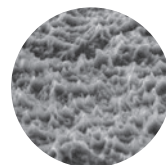
Allows Easier and quicker implant insertion in various bone condition
Helps to reduce bone stress during insertion and penetrate the bone with ease



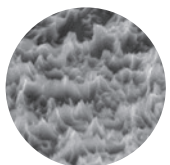
3 Blade Cutting Edge

Self-tapping function allows smooth insertion with minimal bone destruction
Rounded implant apex reduces risk of bone perforation

x3.0k



x5.0k



S.L.A Surface Treatment Sandblasted, Large grits, Acid etched

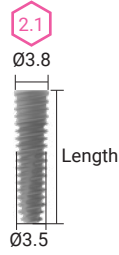
Most researched and proven surface technology

Unit : mm, Scale 1 : 1.2 / mm

Body Ø3.5 | Platform Ø3.8



7.0 8.0 9.5 11.0 12.5 14.5

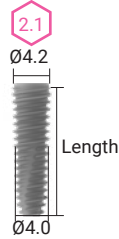


Connection	PINK
Length	REF NO.
7.0	KS 35 07 SA
8.0	KS 35 08 SA
9.5	KS 35 10 SA
11.0	KS 35 11 SA
12.5	KS 35 13 SA
14.5	KS 35 15 SA

Body Ø4.0 | Platform Ø4.2



7.0 8.0 9.5 11.0 12.5 14.5

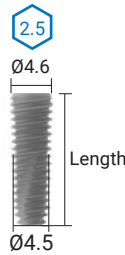


Connection	PINK
Length	REF NO.
7.0	KS 40 07 SA
8.0	KS 40 08 SA
9.5	KS 40 10 SA
11.0	KS 40 11 SA
12.5	KS 40 13 SA
14.5	KS 40 15 SA

Body Ø4.5 | Platform Ø4.6



7.0 8.0 9.5 11.0 12.5 14.5

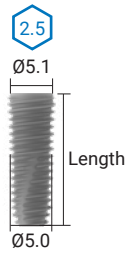


Connection	BLUE
Length	REF NO.
7.0	KS 45 07 SA
8.0	KS 45 08 SA
9.5	KS 45 10 SA
11.0	KS 45 11 SA
12.5	KS 45 13 SA
14.5	KS 45 15 SA

Body Ø5.0 | Platform Ø5.1



7.0 8.0 9.5 11.0 12.5 14.5

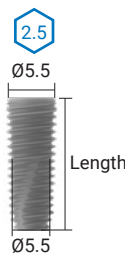


Connection	BLUE
Length	REF NO.
7.0	KS 50 07 SA
8.0	KS 50 08 SA
9.5	KS 50 10 SA
11.0	KS 50 11 SA
12.5	KS 50 13 SA
14.5	KS 50 15 SA

Body Ø5.5 | Platform Ø5.5



7.0 8.0 9.5 11.0 12.5 14.5



Connection	BLUE
Length	REF NO.
7.0	KS 55 07 SA
8.0	KS 55 08 SA
9.5	KS 55 10 SA
11.0	KS 55 11 SA
12.5	KS 55 13 SA
14.5	KS 55 15 SA

*Cover screw **KCS 16(Pink)**, **ATCS 20 R(Blue)** is included

Internal Bone Level - Micro Thread IB^{MT} System



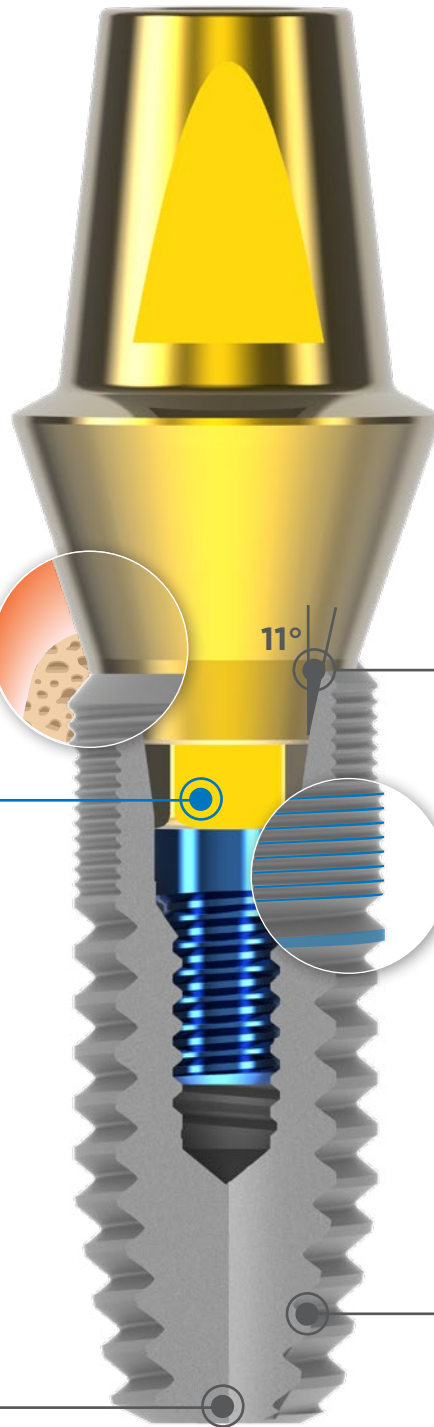
IB-MT



MICRO THREAD

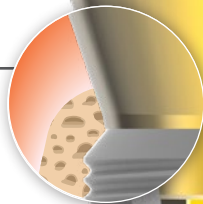


CONNECTION



Platform Switching

Reduces the risk of inflammatory cell infiltration
Greatly contributes to marginal bone preservation and soft tissue attachment



Morse Tapered Hex Connection

Provides anti-rotation and allows for convenient indexing of the abutment
Distributes the load to the fixture evenly and helps to reduce the micro movement

11°

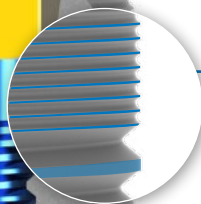
Single Abutment Connection

Regardless of diameter of IB-MT (3.5mm-5.0mm) implants share the same internal hex connection



Synchronized Micro with Macro Thread

Increases axial stiffness of the implant and to decrease shearing stresses in the cortical bone
Optimal for the distribution of the marginal forces
Helps to reduce bone stress during insertion and penetrate the bone with ease

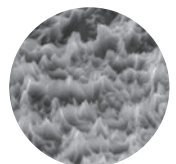
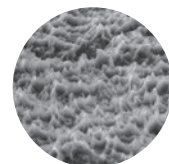


3 Blade Cutting Edge

Self-tapping function allows smooth insertion with minimal bone destruction
Rounded implant apex reduces risk of bone perforation

x3.0k

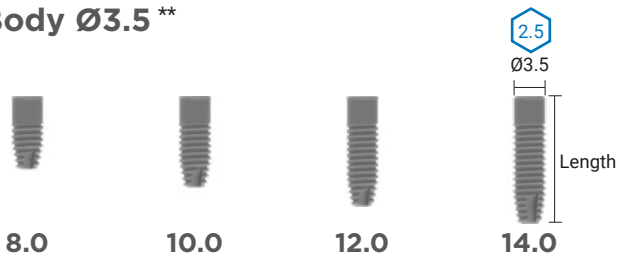
x5.0k



S.L.A Surface Treatment Sandblasted, Large grits, Acid etched

Most researched and proven surface technology

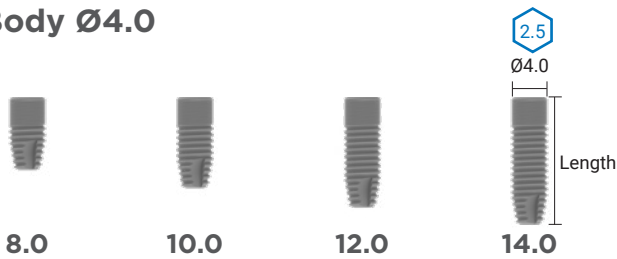
Body Ø3.5 **



Unit : mm, Scale 1 : 1.2 / mm

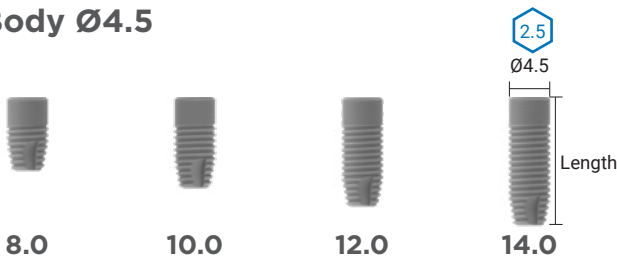
Connection	BLUE
Length	REF NO.
8.0	AT 35 08 SA
10.0	AT 35 10 SA
12.0	AT 35 12 SA
14.0	AT 35 14 SA

Body Ø4.0



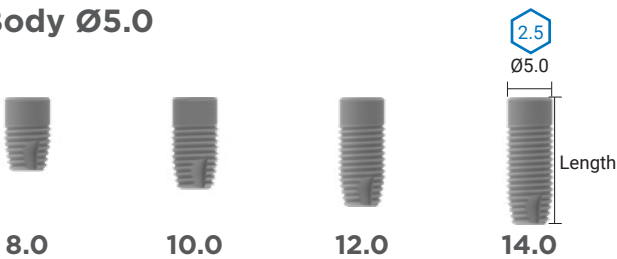
Connection	BLUE
Length	REF NO.
8.0	AT 40 08 SA
10.0	AT 40 10 SA
12.0	AT 40 12 SA
14.0	AT 40 14 SA

Body Ø4.5



Connection	BLUE
Length	REF NO.
8.0	AT 45 08 SA
10.0	AT 45 10 SA
12.0	AT 45 12 SA
14.0	AT 45 14 SA

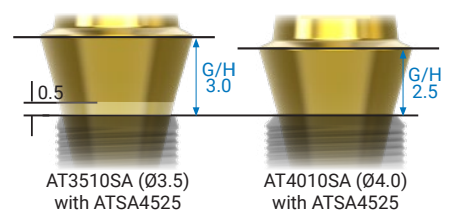
Body Ø5.0



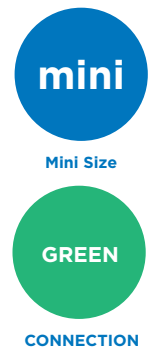
Connection	BLUE
Length	REF NO.
8.0	AT 50 08 SA
10.0	AT 50 10 SA
12.0	AT 50 12 SA
14.0	AT 50 14 SA

*Cover screw **ATCS 20M(Ø3.5)**, **ATCS 20 R(Ø4.0-5.0)** and **Mount ATFM 32S** are included

**When an abutment is assembled with Ø3.5 fixture, the exposed part of the abutment is 0.5mm higher than compared to when using other fixture diameters.



Internal Bone Level - mini IB mini System



Platform Switching

Reduces the risk of inflammatory cell infiltration
Greatly contributes to marginal bone preservation and soft tissue attachment

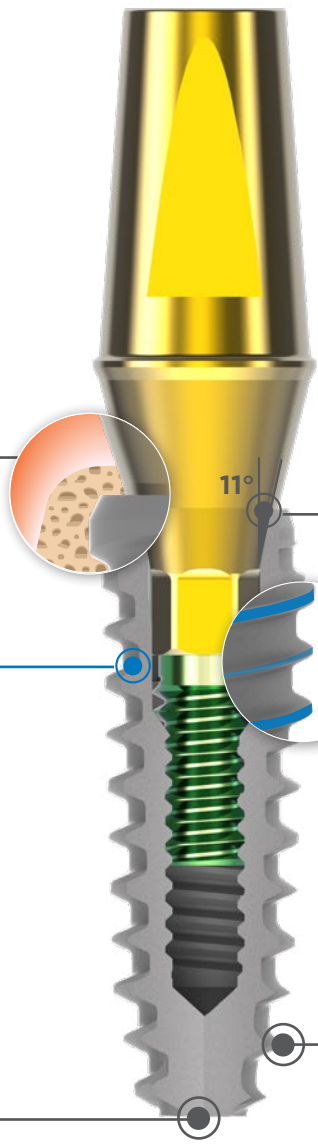
Small but Strong

Suitable for narrow interdental space like maxillary lateral incisors as well as mandibular incisors



3 Blade Cutting Edge

Self-tapping function allows smooth insertion with minimal bone destruction
Rounded implant apex reduces risk of bone perforation



Morse Tapered Hex Connection

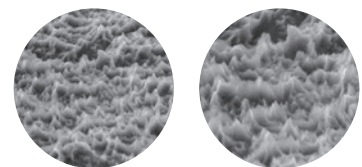
Provides anti-rotation and allows for convenient indexing of the abutment
Distributes the load to the fixture evenly and helps to reduce the micro movement

Hybrid Double Thread

Allows Easier and quicker implant insertion in various bone condition
Helps to reduce bone stress during insertion and penetrate the bone with ease

x3.0k

x5.0k

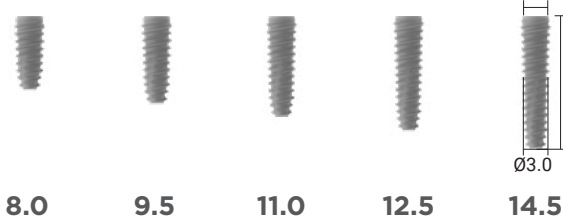


S.L.A Surface Treatment Sandblasted, Large grits, Acid etched

Most researched and proven surface technology

Two Piece Type

Body Ø3.0 | Platform Ø3.2



Unit : mm, Scale 1 : 1.2 / mm

*MFX-XX XX SD: Double hex

Connection	GREEN	
	Double Hex	Single Hex
Length 8.0	KM 30 08 SA	MFX-32 08 S
Length 9.5	KM 30 10 SA	MFX-32 10 S
Length 11.0	KM 30 11 SA	MFX-32 11 S
Length 12.5	KM 30 13 SA	MFX-32 13 S
Length 14.5	KM 30 15 SA	MFX-32 15 S

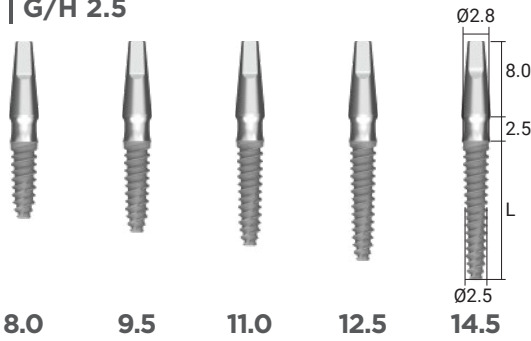
*Cover screw KMCS14 is included

Post Type

Unit : mm, Scale 1 : 1.2 / mm

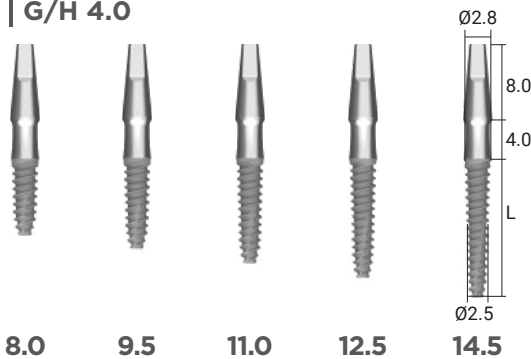
Body Ø2.5 | Thread(Maximum) Ø2.8

| G/H 2.5



Connection	GREEN ONE BODY	
G/H	2.5	
Length	International	US only
8.0	KMP 25 25 08 SA	MPX-28 25 08S
9.5	KMP 25 25 10 SA	MPX-28 25 10S
11.0	KMP 25 25 11 SA	MPX-28 25 11S
12.5	KMP 25 25 13 SA	MPX-28 25 13S
14.5	KMP 25 25 15 SA	MPX-28 25 15S

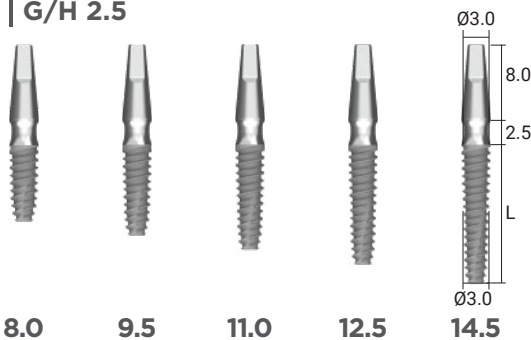
| G/H 4.0



Connection	GREEN ONE BODY	
G/H	4.0	
Length	International	US only
8.0	KMP 25 40 08 SA	MPX-28 40 08S
9.5	KMP 25 40 10 SA	MPX-28 40 10S
11.0	KMP 25 40 11 SA	MPX-28 40 11S
12.5	KMP 25 40 13 SA	MPX-28 40 13S
14.5	KMP 25 40 15 SA	MPX-28 40 15S

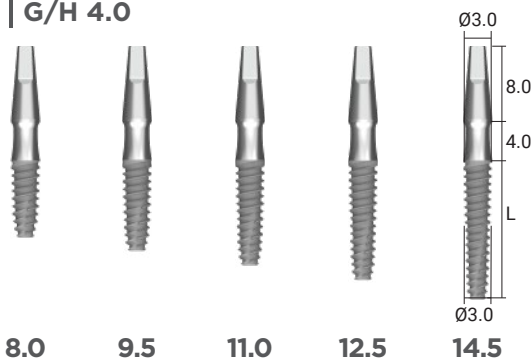
Body Ø3.0 | Thread(Maximum) Ø3.0

| G/H 2.5



Connection	GREEN ONE BODY	
G/H	2.5	
Length	International	US only
8.0	KMP 30 25 08 SA	MPX-30 25 08S
9.5	KMP 30 25 10 SA	MPX-30 25 10S
11.0	KMP 30 25 11 SA	MPX-30 25 11S
12.5	KMP 30 25 13 SA	MPX-30 25 13S
14.5	KMP 30 25 15 SA	MPX-30 25 15S

| G/H 4.0



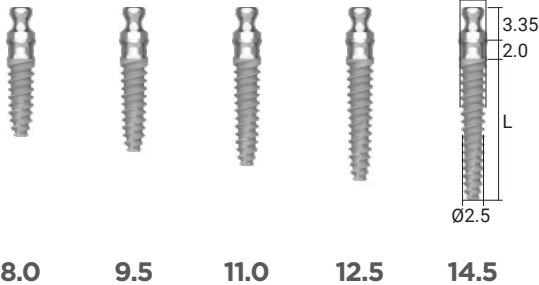
Connection	GREEN ONE BODY	
G/H	4.0	
Length	International	US only
8.0	KMP 30 40 08 SA	MPX-30 40 08S
9.5	KMP 30 40 10 SA	MPX-30 40 10S
11.0	KMP 30 40 11 SA	MPX-30 40 11S
12.5	KMP 30 40 13 SA	MPX-30 40 13S
14.5	KMP 30 40 15 SA	MPX-30 40 15S

Ball Type

Unit : mm, Scale 1 : 1.2 / mm

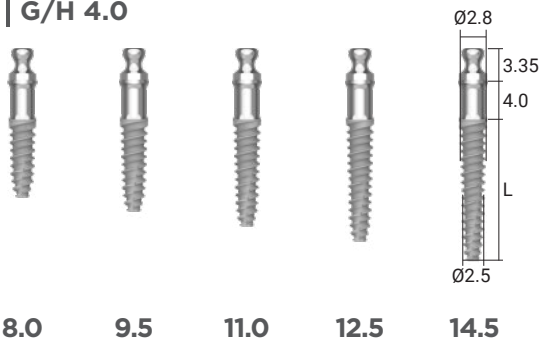
Body Ø2.5 | Thread(Maximum) Ø2.8

| G/H 2.0



Connection	GREEN ONE BODY	
G/H	2.0	
Length	International	US only
8.0	KMB 25 20 08 SA	MBX-28 20 08S
9.5	KMB 25 20 10 SA	MBX-28 20 10S
11.0	KMB 25 20 11 SA	MBX-28 20 11S
12.5	KMB 25 20 13 SA	MBX-28 20 13S
14.5	KMB 25 20 15 SA	MBX-28 20 15S

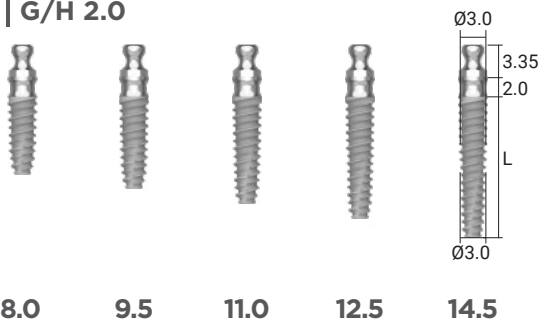
| G/H 4.0



Connection	GREEN ONE BODY	
G/H	4.0	
Length	International	US only
8.0	KMB 25 40 08 SA	MBX-28 40 08S
9.5	KMB 25 40 10 SA	MBX-28 40 10S
11.0	KMB 25 40 11 SA	MBX-28 40 11S
12.5	KMB 25 40 13 SA	MBX-28 40 13S
14.5	KMB 25 40 15 SA	MBX-28 40 15S

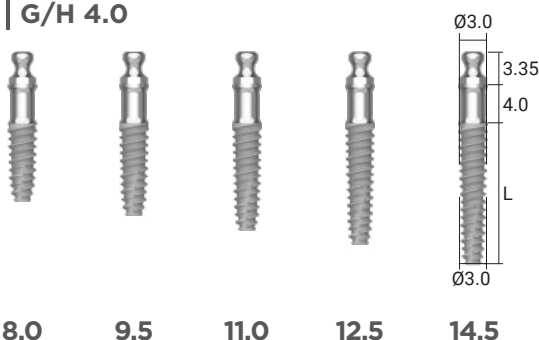
Body Ø3.0 | Thread(Maximum) Ø3.0

| G/H 2.0



Connection	GREEN ONE BODY	
G/H	2.0	
Length	International	US only
8.0	KMB 30 20 08 SA	MBX-30 20 08S
9.5	KMB 30 20 10 SA	MBX-30 20 10S
11.0	KMB 30 20 11 SA	MBX-30 20 11S
12.5	KMB 30 20 13 SA	MBX-30 20 13S
14.5	KMB 30 20 15 SA	MBX-30 20 15S

| G/H 4.0



Connection	GREEN ONE BODY	
G/H	4.0	
Length	International	US only
8.0	KMB 30 40 08 SA	MBX-30 40 08S
9.5	KMB 30 40 10 SA	MBX-30 40 10S
11.0	KMB 30 40 11 SA	MBX-30 40 11S
12.5	KMB 30 40 13 SA	MBX-30 40 13S
14.5	KMB 30 40 15 SA	MBX-30 40 15S



ACH Medical Co., Ltd.

28, Namyang-ro 930beon-gil, Namyang-eup,
Hwaseong-si, Gyeonggi-do, Rep.of Korea, 18255
TEL +82-31-355-7110 FAX +82-31-355-6759

Copyright ACH Medical.,Ltd. All Rights Reserved.

GFL-2005-REV01