



# G<sup>®</sup>D<sub>1</sub>IFF

---

## TOTAL SOLUTION SUPPLIER

---

**Regeneration** | Bone Grafts & Membranes  
**Surgery** | Surgical Engine & Handpiece





---

**ACH Medical Co., Ltd.**

28, Namyang-ro 930beon-gil,  
Namyang-eup, Hwaseong-si, Gyeonggi-do, Rep.of Korea, 18255

TEL +82-31-355-7110(Extension.3) FAX +82-31-355-6759





**G·D·IFF**

**TOTAL  
SOLUTION  
SUPPLIER**







# TABLE OF CONTENTS

## **Overdenture System 07**

- Kerator

## **Dental Surgical Implant Engine 11**

- GDIFF Ki-20 11

## **Bone Graft 13**

- InterOss® 13

- Titan X 14

- Equimatrix Collagen 15

- Excelos Inject 16

- Sorbone 17

## **Membrane 18**

- Diaderm 18

- CG-GIDE 19

# Overdenture System

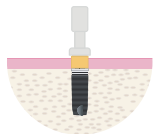
## Kerator



### Overdenture Attachment Systems

Kerator has the world’s most powerful competitiveness in overdenture attachment system. KERATOR was chosen over the other overdenture attachment, for the comfortable retention power of caps and excellent mobility in the denture metal housing, in the world market.

**ADVANTAGE**



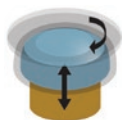
Included plastic carrier provides safer handling of the abutment. The carrier is also useful for checking the alignment angles of the implant fixtures.



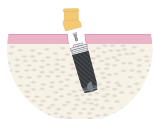
Kerator has the **LOWEST VERTICAL HEIGHT** of all overdenture attachment system available today.



**DUAL RETENTION MALE** allows the denture cap to gently pivot in any natural direction during occlusal while providing greater resiliency and preventing it from dislodging.



**SELF-ALIGNING DESIGN** automatically centers the male on the housing attachment prior to engagement, allowing patients to easily seat their overdenture.



**EXTENDED RANGE MALE** allows for insertion of the overdenture with up to 40 degree of divergence between implants. 15 degree angled abutments can be used in combination to further extend the allowable divergence.



The **DUAL UNDERCUT DESIGN** of the Kerator metal housing attachment provides a sturdier retention within the denture acrylic.

## Kerator (Straight Type) | Blue Connection

Unit : mm



Connection	BLUE
G/H	REF.NO
1.0	G401
2.0	G402
3.0	G403
4.0	G404
5.0	G405
6.0	G406

- Straight type
- Use Kerator tip
- **Male Cap Set, Carrier** are included

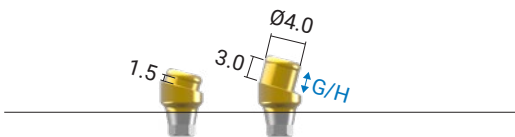
### \*Male Cap Set



### \*Carrier



## Kerator (15° Angled Type) | Blue Connection



Connection	BLUE
G/H	REF.NO
1.5	G4AN1.5
3.0	G4AN3.0

- Angled Type
- Use 1.25 Hex Driver
- **Male Cap Set, Carrier, Abutment Screw** are included

### \*Male Cap Set



### \*Carrier



### \*Abutment Screw



## Magic Tool

Unit : mm, Scale 1 : 1.2 / mm



REF.NO
KMT002

- Composed Insertion part and removal part.

## Torque Wrench Tip



Type	Square Connector	Round Connector
-	KMD619	KMD719

- Tightening abutment
- Recommended Torque : 25~30Ncm

## Hand Housing



REF.NO
KMH001

- For Square Connector (KMD619)



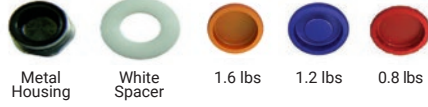
## Male Cap Set

Unit : mm, Scale 1 : 1.2 / mm

\*Straight type



\*Angled type



REF.NO	
CDPH SET	Straight type
	Angled type

- 1 metal housing + 1 white spacer + 3 color caps(pink, blue, red)
- Pink cap - 2.4 lbs, Orange cap - 1.6 lbs, Blue cap - 1.2 lbs, Red Cap - 0.8 lbs

## Kerator Analog



REF.NO
DKA3854

## Kerator Coping



REF.NO
DKI4845

## Dental Surgical Implant Engine

# G-DIFF Ki-20

Type	REF.NO	Voltage
Optic	KI20 O	110V
		220V

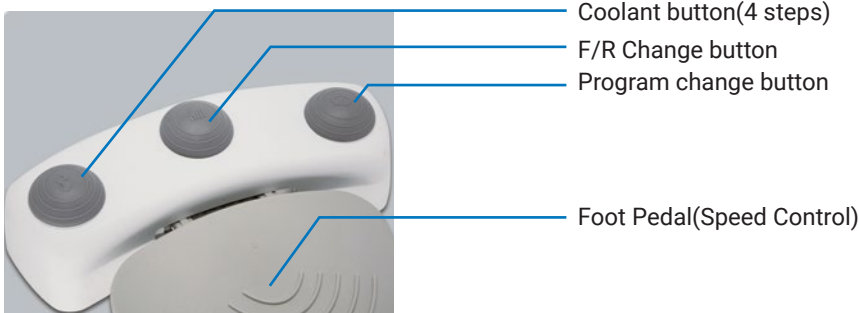


## ADVANCED IRRIGATION PUMP

The pump allows easy set-up of irrigation tubes and is extremely quiet during operation.



## FOOT CONTROL



## FEATURE

- Optic LED Control
- Compact Micro motor 40,000 rpm (1:1)
- 9 memory programs can be stored on single motor
- Light & compact optic motor for speedy and accurate surgery
- Package includes Control Unit, E-type motor, Contra angle Handpiece, Foot control and Handpiece stand
- The pump allows easy set-up of irrigation tubes and is extremely quiet during operation
- Foot control - Coolant button(4 steps), F/R change button, Program change, Foot pedal(Speed Control)

## SPECIFICATIONS

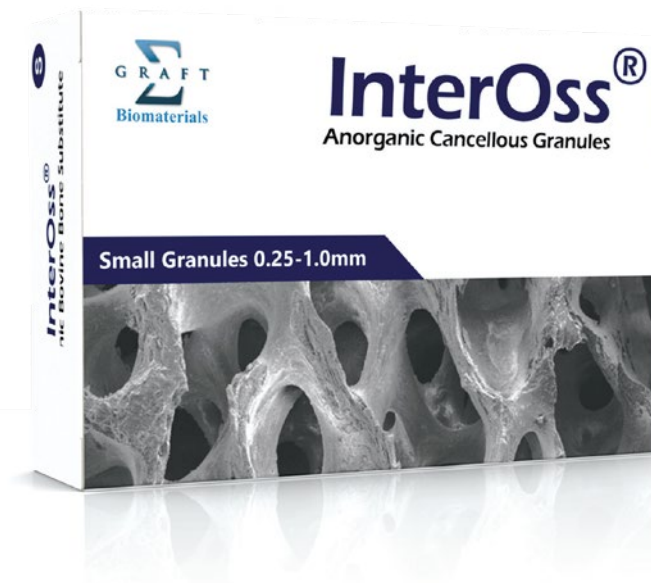
- Power supply : AC100-120 or AC220-240V 50/60 Hz
- Speed : 20-2,000(20:1)
- Torque : 70Ncm(20:10)
- Weight : 2.6kg
- Dimension : W240 X D225 X H108(mm)



## Bone Graft - Xenograft

# InterOss®

-	Particle size	
Volume (g)	0.25~1.0mm	1.0~2.0mm
0.25	IOSG025	-
0.5	IOSG050	IOLG050
1.0	IOSG100	IOLG100
2.0	IOSG200	IOLG200



### FEATURE

- Natural hydroxy-apatite bone grafting material derived from Australia bovine bone (BSE free)
- Highly purified osteoconductive material is produced from natural bone through a multi-step purification process
- Available in granule form (supplied sterile and is dedicated for single use)
- The presence of a macro-porous structure favors cell ingrowth, while the micropores allow the penetration of body fluids into the implant.
- The pore structure and interconnected pore system of InterOss® allow the grafting material to act as a guide for body fluids, growth factors, blood vessel, bone marrow, and bone cells.

## Bone Graft - Xenograft

# Titan X

-	Particle size
Volume (g) / (cc)	0.5~1.0mm
0.25 / 0.45	25-0210
0.5 / 0.8	05-0210
1.0 / 1.5	10-0210
2.0 / 3.0	20-0210



### FEATURE

- Cancellous bone extracted from Calf raised in Australia
- Low-temperature processing technique allows ideal, natural surface topography, the same as human bone, stimulating osteoblast activity. The vitrification phenomenon caused by the high-temperature process has been completely controlled.
- Pre HA structure, octacalcium phosphate crystal is found on the surface of TITAN-X, resulting in fast bone formation.

### USAGE

1. Remove any soft tissue or granulation tissue carefully and expose the fresh bone.
2. Saturate TITAN-X with patient's blood or normal saline or PRP (platelet-rich plasma). Avoid distilled water. Fill the defect site with the prepared TITAN-X mixture with a sterilized spatula or surgical spoon.
3. Protect the graft mass with a membrane or PRF(platelet-rich fibrin.)
4. Tie up the wound carefully. Exposure in the oral cavity may induce oral microorganisms that can cause infection.

## Bone Graft - Xenograft plus collagen

# Equimatrix Collagen

Dimension (mm)	Weight (g)	REF.NO
6x7x6	100	CH-0110-010
8x9x8	250	CH-0110-025



### FEATURE

- Cancellous bone granules and purified type I collagen (10%) from Procine skin
- It can be transformed into various shapes in dry condition or wet condition with blood or saline solution.
- Collagen is extracellular matrix of bone tissues, which creates the environment favorable for bone generation and is decomposed after a certain time.
- Formation of new bone, Space maintenance
- It promotes bone regeneration and helps aesthetic issue of soft tissues.



## Bone Graft - Synthetic Graft

# Excelos Inject

Voulme (g) / (cc)	REF.NO
0.45 / 0.29	IEXT0100
0.75 / 0.50	IEXT0300
1.5 / 1.00	IEXT0500



### FEATURE

- Pure  $\beta$  tricalcium phosphate beads mixed with bio degradable hydrogel
- Injection type ceramic bone graft material using a poloxamer based hydrogel
- Ca/P ratio (1.5) maintains a proper absorption period during bone regeneration

## Bone Graft - Synthetic Graft

# Sorbone

-	Particle size	
	0.5~1.0mm	1.0~2.0mm
Volume (g)		
0.25	Sorbone 0.5~1.0mm, 0.25g	Sorbone 1.0~2.0mm, 0.25g
0.5	Sorbone 0.5~1.0mm, 0.5g	Sorbone 1.0~2.0mm, 0.5g
1.0	Sorbone 0.5~1.0mm, 1.0g	Sorbone 1.0~2.0mm, 1.0g
2.0	Sorbone 0.5~1.0mm, 2.0g	Sorbone 1.0~2.0mm, 2.0g



### FEATURE

- Excellent osteoconductivity
- Outstanding bio-compatibility (No Biological rejection, No disease transmission)
- Accurate and problem-free implantation
- Easy handling
- Porosity : 55~60%

## Resorbable Membrane

**Diader M**

Size (mm)	REF.NO
15x30	DTG-10002

**FEATURE**

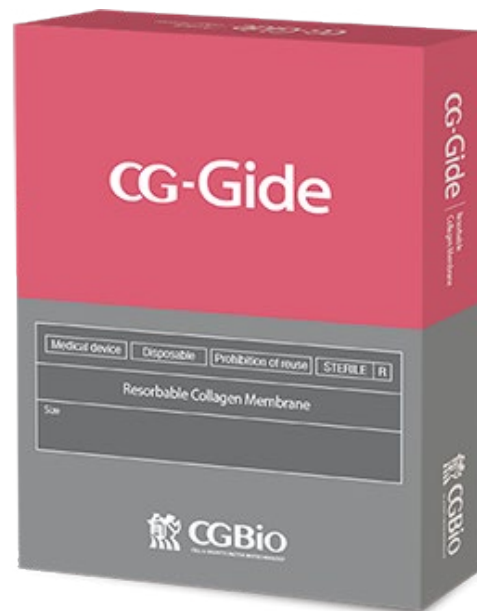
- Resorbable collagen membrane (Porcine) stable degradation period
- Bio-compatibility and stability
- Easy Manipulation with low thickness, flexibility
- Stable degradation period
- Minimal inflammation



## Resorbable Membrane

# CG-GIDE

Dimension (mm)	REF.NO
10x20	CGCM1020
15x20	CGCM1520



### FEATURE

- CG-Gide is an absorbable periodontal tissue regeneration inducer made of bovine tendon collagen.
- It is used to increase the alveolar bone around the tooth and regenerate periodontal tissue during extraction and dental treatment.
- This product helps the periodontal tissue regeneration by securing a space in the area where bone regeneration is required to prevent the downward movement of soft tissue.
- It is absorbed after a certain period of time, so there is no need for a secondary procedure to remove the product.

